

**KENT AND  
MEDWAY  
MEDICAL  
SCHOOL**

Become  
the **doctor**  
you want  
to be



University of  
**Kent**

**2024 entry**



**“At Kent and Medway Medical School, we expect academic ability, but equally we are looking for the right personal qualities that people require in a good doctor.”**

Professor Chris Holland  
Founding Dean of Kent and Medway Medical School



# Welcome

I am tremendously excited to welcome you to the Kent and Medway Medical School (KMMS).

We are looking for students who share our passion for innovation, collaboration, and person-centred medicine. We want our graduates to embrace the life-changing experiences and opportunities on offer, grow to become exemplary practitioners, as well as active communicators and advocates for diversity and equality in and outside the profession.

KMMS is an exciting collaboration between Canterbury Christ Church University and the University of Kent, and draws on both their research and teaching strengths. Based in Canterbury, our school educates aspiring doctors to train to deliver 21st century medicine. We are proud to attract talented students from all backgrounds and offer opportunities to help to transform the future of healthcare.

I can also see the amazing potential for the next generation of health professionals to shape our future. We will cure diseases that are currently fatal and will help more people than ever live longer, and with better health, despite complex and chronic wellbeing challenges. We are confident that a KMMS medical degree will enable our graduates to be at the forefront of these advances in medical science, as we place the School at the leading edge of UK and global medical education and research.

We wish you every success in your application.

**Professor Chris Holland** | Founding Dean

# Our vision

**Kent and Medway Medical School will be a beacon for first-class medical education and research, and the first choice for all those aspiring to achieve excellence in person-centred medical care in the UK.**

# Our values

- **Be brave**
- **Be kind**
- **Be respectful**
- **Be passionate**
- **Be collaborative**
- **Be innovative**
- **Be curious**

# Why choose KMMS?

Verena Holmes Building,  
Canterbury Christ Church University campus



## Excellent resources

You will work in state-of-the-art facilities at the Canterbury campuses of both universities. These include a high-fidelity hospital simulation suite, Kent's first GP simulation suite, an anatomy learning centre for dissection, prosection and radiology, lecture theatres, seminar rooms and work spaces. You will also benefit from access to both universities' libraries, IT and sports facilities.

## An outstanding team

We have successfully recruited a high calibre team who bring international, national and local expertise to KMMS. Many of our inspirational academics and academic researchers, including our Dean and Deputy Dean, also practise in clinical settings locally ensuring they continually learn about the challenges, priorities and goals of our students, patients, colleagues and other care providers.



## **A well-established partner medical school**

As a new medical school, KMMS is working in partnership with the highly regarded and long-established Brighton and Sussex Medical School for support and quality purposes.

## **A welcoming NHS community across Kent and Medway**

We have built exciting new relationships with partners across the NHS in Kent and Medway from community, primary, secondary, acute and mental health care settings. With over 200 GP practices, community care and mental health care providers and 4 acute care providers in our region, you will experience a diverse range of healthcare priorities and solutions. These connections have allowed us to build a programme of high-quality placements across our region from your first term until you graduate at Canterbury Cathedral.

# Our degree programme

**Our Bachelor of Medicine, Bachelor of Surgery (BM BS)\* is jointly awarded by Canterbury Christ Church University and the University of Kent.**



\*In common with all new UK medical schools, Kent and Medway Medical School is subject to successful progress through the GMC's rigorous quality assurance processes. We have successfully completed several stages of this process and will be subject to ongoing review. The final-stage assessment and approval for the award of a UK medical degree is at the end of the first complete delivery of the course.

## What our course offers you

- **A systems-based curriculum**
- **An innovative and integrated programme**
- **Early patient contact** – you will begin clinical placements within the first term of the first year of your course



Learning will be delivered through lectures, small group learning, dissection and prosection, tutorials, simulation, e-modules, placements and through self-directed learning.

## Assessment

You will be assessed throughout the course. We will use a combination of written assessments and practical assessment methods to test your knowledge, communication and clinical skills.

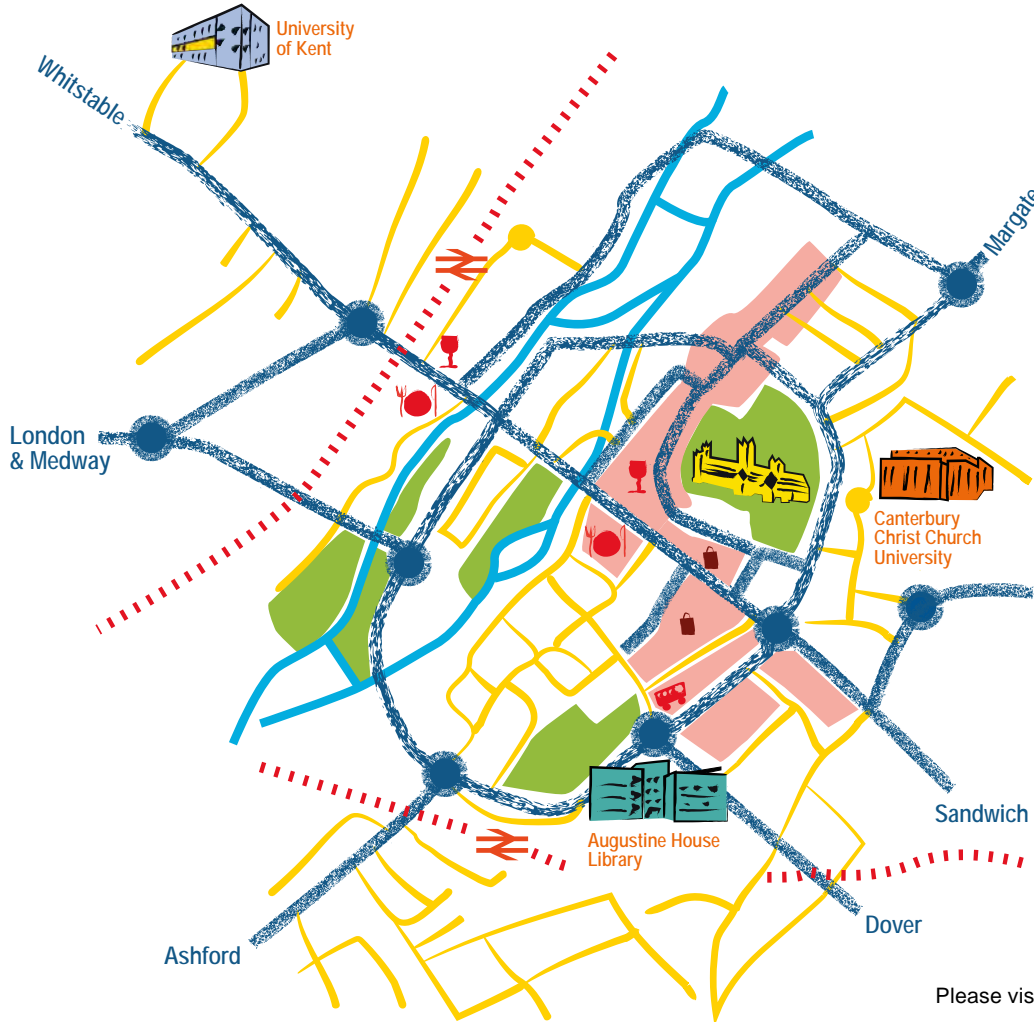
Your professional development will be captured with the ePortfolio. Regular meetings with your Personal Academic Tutors and supervisors will ensure you are given the right support to keep you on track with the course.

# Course structure

Year 1	Community and Primary Care in Practice 1			
	Professional Development and Person-Centred Practice 1			
	Skills for Clinical Practice 1			
	Foundations of Health and Disease	Heart, Lungs and Blood	Nutrition, Metabolism and Excretion	
Year 2	Community and Primary Care in Practice 2			
	Professional Development and Person-Centred Practice 2			
	Skills for Clinical Practice 2			
	Neuroscience and Behaviour	Reproduction and Endocrinology	Musculoskeletal and Immune Systems	
Year 3	 Medicine	Surgery and Perioperative Care		Integrated Practice 1
	Clinical Foundations course			
	Clinical Pharmacology and Therapeutics			
	Scientific Basis of Medicine			
	 Elderly Medicine and Psychiatry			
Year 4	Specialist Rotations			Integrated Practice 2
	General Practice			
	Individual Research Project			
Year 5	<b>Senior Rotations</b> (Emergency Medicine; General Practice; Psychiatry; Medicine; Surgery)		<b>Finals</b> (Electives; Preparation for Practice; Assessments)	



# Living and studying in Kent



Both campuses are close to Canterbury city centre, making it an ideal place to study and live. Just a short distance from the sea and only an hour's train journey from London, there's plenty to explore and enjoy in Kent and Medway and beyond. Mainland Europe is also within easy reach by ferry or train.

In the first two years you will study at both campuses (about 15 minutes apart by bus and 45 minutes on foot) sharing facilities with students in other healthcare professions and from a wide range of academic disciplines. You will also have primary care placements in other locations within Kent and Medway.

Years 3-5 will provide the opportunity to experience living and studying for the majority of the year in a part of the region associated with the NHS Trust of your placement. Here your confidence, clinical and communication skills will be further developed as you rotate through a program of medical, surgical and other specialties to complete the GMC requirements for medical student training.

Please visit our website for more details: [www.kmms.ac.uk](http://www.kmms.ac.uk)



# The best of both worlds

The medical school is a collaboration between two universities, so as a KMMS medical student you will be a student of both the University of Kent and Canterbury Christ Church and can enjoy access to the benefits of both parent universities. You have access to facilities at both and can choose accommodation on either campus where you will be co-located with other medical or healthcare students. For more information please visit: [www.kmms.ac.uk/accommodation](http://www.kmms.ac.uk/accommodation)

You will also be a member of both Students' Unions and will have access to hundreds of clubs and societies. If you don't find the right one for you, you can set up a new one.



# Student Life and Wellbeing Service

**KMMS Student Life and Wellbeing Service are dedicated to supporting students with any issues that may be impacting their studies, wellbeing, and experience at the university, and can help students to access specialist support services from both our partner universities.**

To ensure that your life as a medical student begins as smoothly as possible and that you can navigate through the course effectively, a range of support will be available including:

- An extensive welcome and induction programme
- Advice on managing your finances
- Thorough preparation for placements
- Counselling, mental health and emotional wellbeing services
- Support with disabilities, specific learning difficulties and long-term health issues
- Personal Academic Tutors, academic advice, and resources
- IT and library services

## Funding your degree

At KMMS, we can signpost you to help and advice around how to pay your fees and access financial support.

To help future KMMS students we are actively seeking donors to fund bursaries and scholarships. We already have a range of financial support packages available.

Please visit our website for more details: [www.kmms.ac.uk/study/funding-your-degree](http://www.kmms.ac.uk/study/funding-your-degree)

Please visit our website for more details: [www.kmms.ac.uk](http://www.kmms.ac.uk)

# Support throughout your student journey

KMMS facilitates access to a range of services and support provided by both universities.

01



02

KMMS provides a dedicated Student Life and Wellbeing team who works with students as required to identify the best support from both universities.

KMMS recognises that transitions may be challenging so has developed specialist packages of support and timetabled space for reflection and development.

03



04

KMMS adopts an anticipatory approach to support, providing 1:1 check-ins throughout the programme.

The KMMS Student Life and Wellbeing team will work with you on your journey to becoming a medical professional, providing additional support as needed. KMMS students will continue to receive high quality support during placements, via the universities' own student support services or by signposting to specialist services.

05

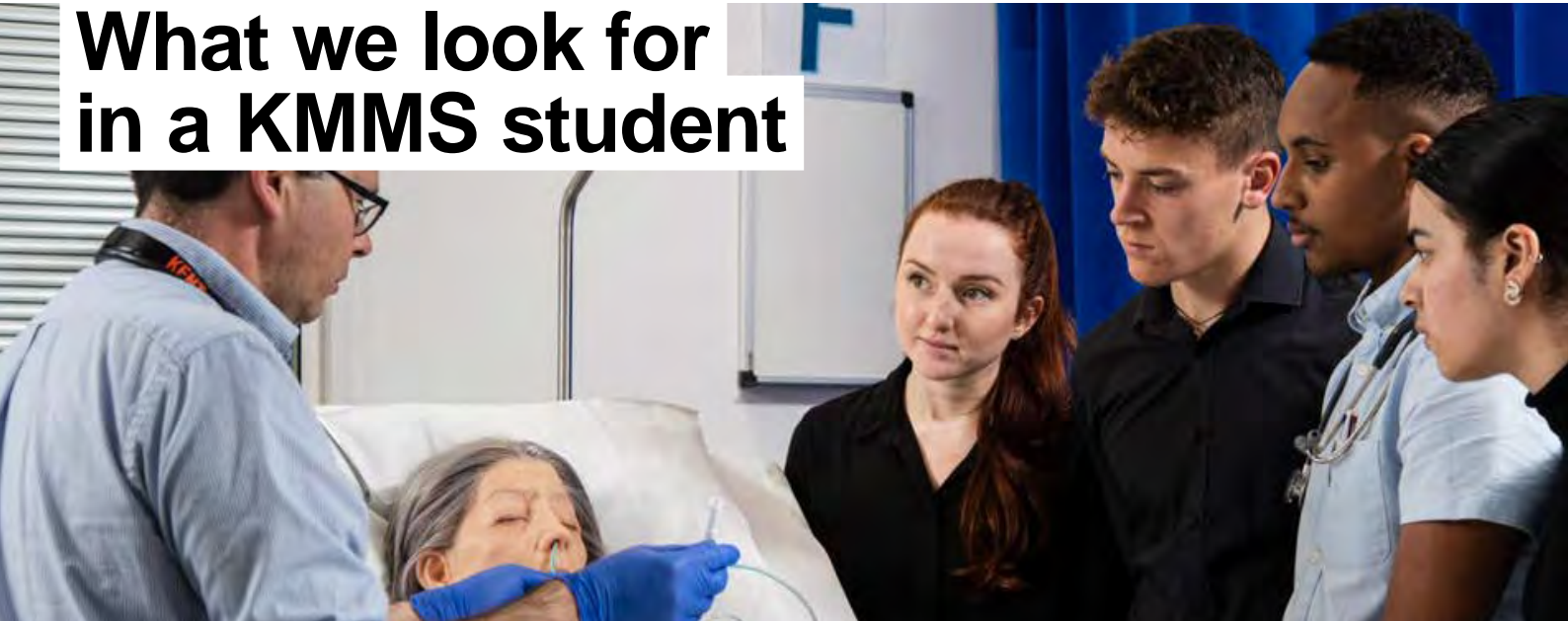


06

Please visit our website for more details:  
[www.kmms.ac.uk](http://www.kmms.ac.uk).

Please visit our website for more details: [www.kmms.ac.uk](http://www.kmms.ac.uk)

# What we look for in a KMMS student



**To study at KMMS, you must possess the abilities, commitment and personal qualities that are necessary to deliver the core NHS values and become an excellent doctor.**

At KMMS we want to encourage doctors from all backgrounds in Kent, Medway and beyond. We aim to widen access to medical degrees and to have a student body that reflects the diverse community we serve.

When selecting our students, we look for:

- Resilient all-rounders who can demonstrate a range of skills and attributes
- Strong academic achievement, particularly relative to their school background
- Commitment to quality of care and improvement
- An understanding of the NHS core values and the ability to put those values in action
- Compassion, and the ability to treat all people with respect and dignity
- Excellent communication skills and effective team working
- Appreciation of other people's views and willingness to accept responsibility
- A realistic and committed understanding of medical training and clinical practice



# MedSoc

Hey! We're the KMMS Medical Society. As medicine is a demanding course, we want to ensure our peers have a chance to participate in a range of activities. This year we have run sports events, pub quizzes, movie nights, charity events and the annual Winter and Halfway Balls.

It's not all socials, socials, socials! We also have an active role in supporting students to voice their opinions and feedback

to the medical school, through student representation at the Student Staff Liaison Committee and within the KMMS governance structure, forming part of an ongoing dialogue between students and faculty to provide the best opportunity to succeed and improve our student experience.

Interests in specialties are nurtured by the increasing number of sub-societies that host numerous events including guest speakers

from a variety of medical and non-medical backgrounds.

Our commitment to being an inclusive and self-aware organisation means we are constantly evolving alongside the medical school. If you think that we're missing something or that we can do something better, we encourage you to reach out to the committee or run in our annual elections to hold a post.

A woman with short dark hair, wearing a blue patterned top, is smiling and interacting with a young child. The child is holding a purple ring of a colorful ring toy. In the background, a woman with glasses and a dark top is watching. The setting appears to be a clinical or educational environment.

# Early Clinical Placements

**Early clinical placements are a key feature of the KMMS programme. For the first two years placements are primarily in primary care networks (PCNs) across Kent and Medway.**

Placement learning activities offer an insight into the needs of patients in a wide range of settings and allow KMMS students to learn

about the variety of roles in healthcare and how these practitioners come together to create effective multi-disciplinary teams.

Working with experienced educators, there will be opportunities to develop the clinical skills taught on campus.

From Year 3 onwards KMMS students will begin placements in the Acute Care Hospital Trusts in Kent and Medway.

# Research



Research is a vital element of the KMMS vision. Our research team is growing and we are developing expertise in several key areas including psychiatry, medical anthropology, public health. We have recently secured funding to allow us to do essential research into rural and coastal healthcare, one of the key areas of health inequalities in our region.

KMMS researchers are also working across a range of local and global health research projects, with the aim to improve the health and wellbeing of the most vulnerable populations in a variety of resource poor settings.

KMMS will offer medical students a range of opportunities to engage with research. Examples include student selected projects, ongoing access to regional and global health research, working with visiting researchers and student electives. These activities will enhance understanding of the delivery of healthcare in diverse communities locally and globally with different healthcare, political and social contexts.





# Entry requirements

Qualification	Required	Required subjects
GCSE or equivalent	A* to B or 9 to 6	5 subjects minimum which must include English Language and Mathematics. We also require Biology, Chemistry and Physics. Double Science will be accepted as an alternative to the three separate sciences
A Level or equivalent	AAB	1st A level group*: Chemistry, Biology 2nd A level group: Chemistry, Biology, Mathematics, Psychology, Physics, Computing/Computer Science 3rd A level group: Any other A level except General Studies, Critical Thinking
International Baccalaureate	34 points	Must include Biology or Chemistry at Higher Level 6 and one further Higher Level subject in Biology, Chemistry, Maths, Physics or Psychology at grade 6
Bachelors degree	2:1 Honours or equivalent	Acceptable degree subjects are listed on our website

**KMMS does not use predicted grades at all. Therefore you will be considered on your most advanced achieved qualifications: GCSE if you are pre-A level, A levels if you are post A level but have not yet graduated from a Bachelor's degree course.**

\*Including the practical endorsement in Science A Levels where appropriate.

## Additional information

- BTEC/IBCP not accepted.
- Applicants who have studied an Access to HE (Medicine) programme will be considered for entry unless they are within three years of sitting A Levels.
- KMMS does not accept deferred entry applicants or transfers from other medical schools.
- All applicants must be 18 years old or above when they undertake their first clinical placement in the first term of Year 1, usually early November
- All successful applicants will need to pass an enhanced Disclosure and Barring Service and Occupational Health Check, which will be arranged and paid for by KMMS.

For further details, please visit:  
[www.kmms.ac.uk/study/applying](http://www.kmms.ac.uk/study/applying)

# How to apply

To apply to KMMS for 2024 entry you will need to submit your application to UCAS by the deadline of **16 October 2023**

UCAS institution Code: **K31**

Course Code: **A100**

You will also need to have taken your UCAT (University Clinical Aptitude Test) within the year of your application.



## What could life after graduating from KMMS hold for you?

KMMS will provide support and advice for students as they near the end of their undergraduate education and look ahead to the next steps in their career. As a newly qualified doctor, you will be equipped with the curiosity, academic, professional and clinical skills to influence and improve future healthcare in Kent and Medway, and beyond.

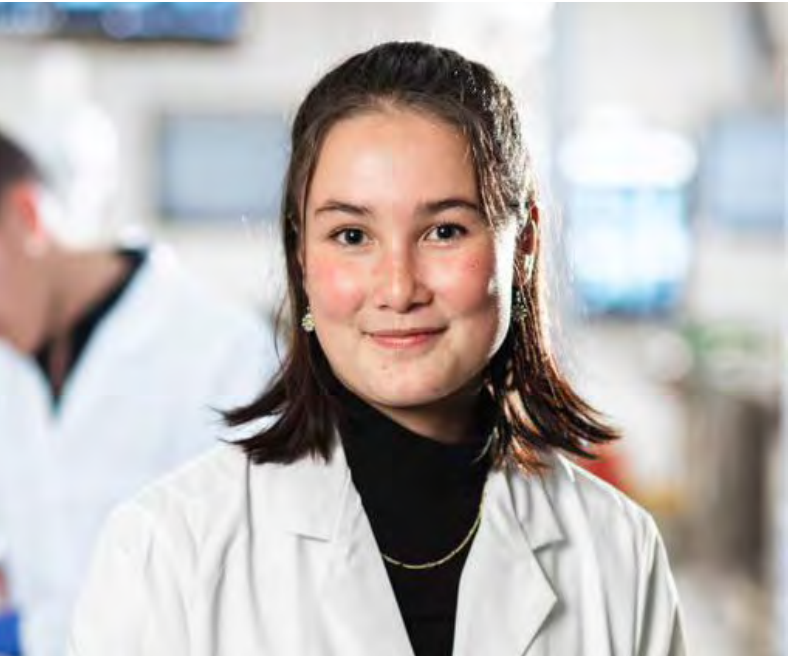
We very much hope you will choose to work in Kent and Medway or the south-east of

England. However, your medical degree will allow you to apply for a Foundation Programme job anywhere in the UK, the postgraduate training program which provides you with the required experience to gain full registration with the General Medical Council.

Once fully registered, you will have the education and experience to apply for any one of over 100 possible medical specialties.

Qualified doctors also work in media, the arts, business, the voluntary sector, government, research and technology. There are national programmes available for medical graduates to obtain specialist postgraduate training and experience in leadership, management, entrepreneurialism and research.

**For information about the application process, interviews and other details, please visit: [www.kmms.ac.uk](http://www.kmms.ac.uk)**



**“I love the sense of community at KMMS. Knowing everyone and having a good relationship with students and staff creates such a supportive environment.”**

Daisy  
KMMS student



**“When I joined KMMS I realised how fortunate I was to be at a medical school which embraces the diversity of its students.”**

Stephen  
KMMS student

## Follow us



@KMMSmedschool

To find out more details and to contact us  
please visit: [www.kmms.ac.uk](http://www.kmms.ac.uk)

Canterbury Christ Church University  
and University of Kent in collaboration.



University of  
**Kent**