

**KENT AND
MEDWAY
MEDICAL
SCHOOL**

**Become
the **doctor**
you want
to be**



Canterbury
Christ Church
University

University of
Kent

2026 entry



“At Kent and Medway Medical School, we expect academic ability, but equally we are looking for the right personal qualities that people require in a good doctor.”

Professor Chris Holland
Founding Dean of Kent and Medway Medical School



Welcome

I am tremendously excited to welcome you to the Kent and Medway Medical School (KMMS).

We are looking for students who share our passion for innovation, collaboration, and person-centred medicine. We want our graduates to embrace the life-changing experiences and opportunities on offer, grow to become exemplary practitioners, as well as active communicators and advocates for equity, diversity and inclusion in and outside the profession.

KMMS is an exciting collaboration between Canterbury Christ Church University and the University of Kent, and draws on both their research and teaching strengths. Based in Canterbury, our school educates aspiring doctors to train to deliver 21st-century medicine. We are proud to attract talented students from all backgrounds and offer opportunities to help to transform the future of healthcare.

I can also see the amazing potential for the next generation of health professionals to shape our future. We will cure diseases that are currently fatal and will help more people than ever live longer, and with better health, despite complex and chronic wellbeing challenges. We are confident that a KMMS medical degree will enable our graduates to be at the forefront of these advances in medical science, as we place the School at the leading edge of UK and global medical education and research.

We wish you every success in your application.

Professor Chris Holland | Founding Dean

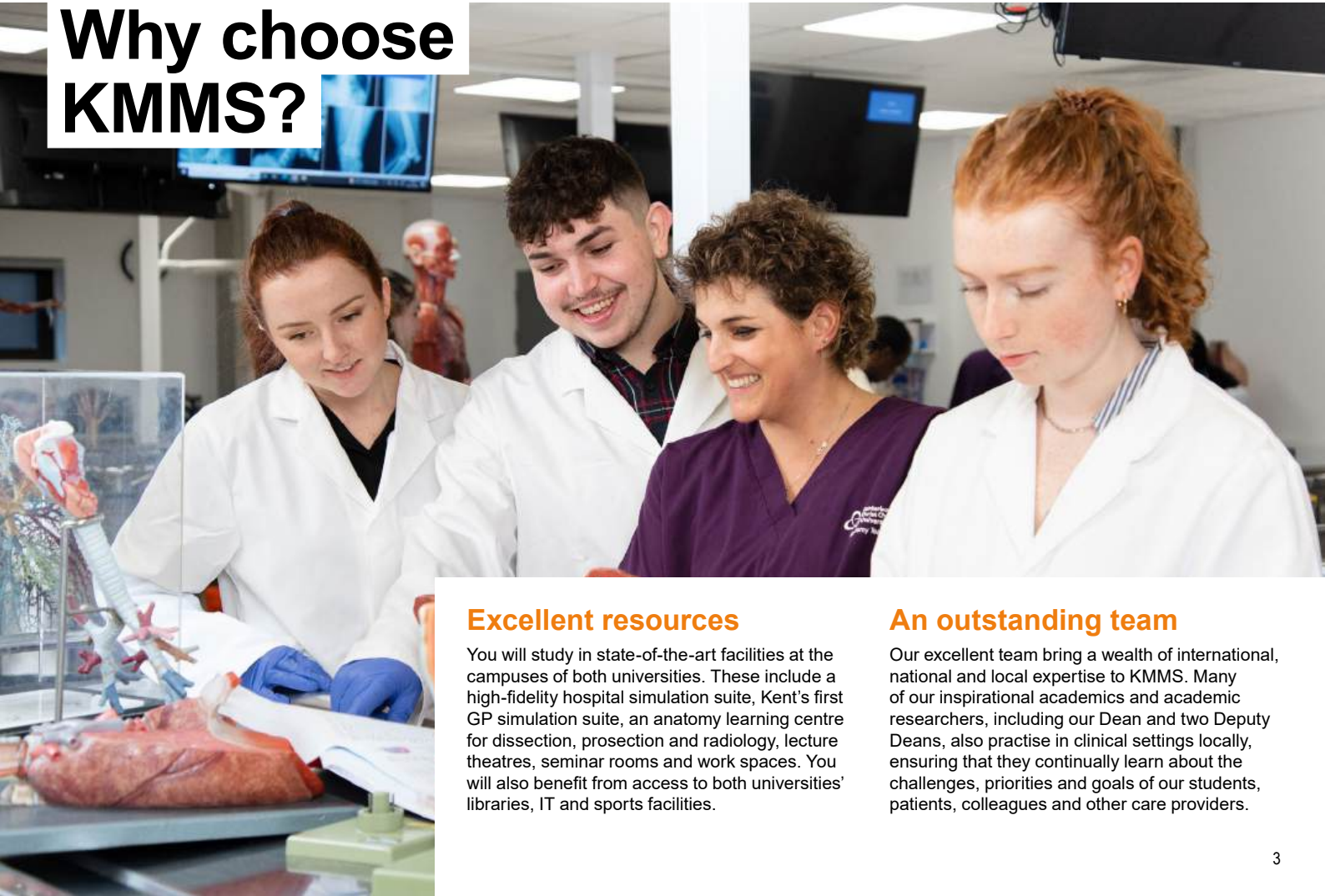
Our vision

Kent and Medway Medical School will be a beacon for first-class medical education and research, and the first choice for all those aspiring to achieve excellence in person-centred medical care in the UK.

Our values

- **Be brave**
- **Be kind**
- **Be respectful**
- **Be passionate**
- **Be collaborative**
- **Be innovative**
- **Be curious**

Why choose KMMS?



Excellent resources

You will study in state-of-the-art facilities at the campuses of both universities. These include a high-fidelity hospital simulation suite, Kent's first GP simulation suite, an anatomy learning centre for dissection, prosection and radiology, lecture theatres, seminar rooms and work spaces. You will also benefit from access to both universities' libraries, IT and sports facilities.

An outstanding team

Our excellent team bring a wealth of international, national and local expertise to KMMS. Many of our inspirational academics and academic researchers, including our Dean and two Deputy Deans, also practise in clinical settings locally, ensuring that they continually learn about the challenges, priorities and goals of our students, patients, colleagues and other care providers.



A well-established partner medical school

As a new medical school, KMMS has been working in partnership with the highly regarded and long-established Brighton and Sussex Medical School for support and quality purposes.

A welcoming NHS community across Kent and Medway

We have built exciting new relationships with partners across the NHS in Kent and Medway from community, primary, secondary, acute and mental health care settings. We are partnered with 90 GP practices, community and mental healthcare providers and 4 acute care hospital trusts. You will experience a diverse range of healthcare priorities and solutions. These connections have allowed us to build a programme of high-quality placements across our region from your first term until you graduate at Canterbury Cathedral.

Our degree programme

Our Bachelor of Medicine, Bachelor of Surgery (BM BS)* is jointly awarded by Canterbury Christ Church University and the University of Kent.



*In common with all new UK medical schools, Kent and Medway Medical School is subject to successful progress through the GMC's rigorous quality assurance processes. We have successfully completed several stages of this process and will be subject to ongoing review. The final-stage assessment and approval for the award of a UK medical degree is at the end of the first complete delivery of the course.

What our course offers you

- **A systems-based curriculum**
- **An innovative and integrated programme**
- **Early patient contact** – you will begin clinical placements within the first term of the first year of your course



Learning will be delivered through lectures, small group learning, dissection and prosection, tutorials, simulation, e-modules, placements and through self-directed learning.

Assessment

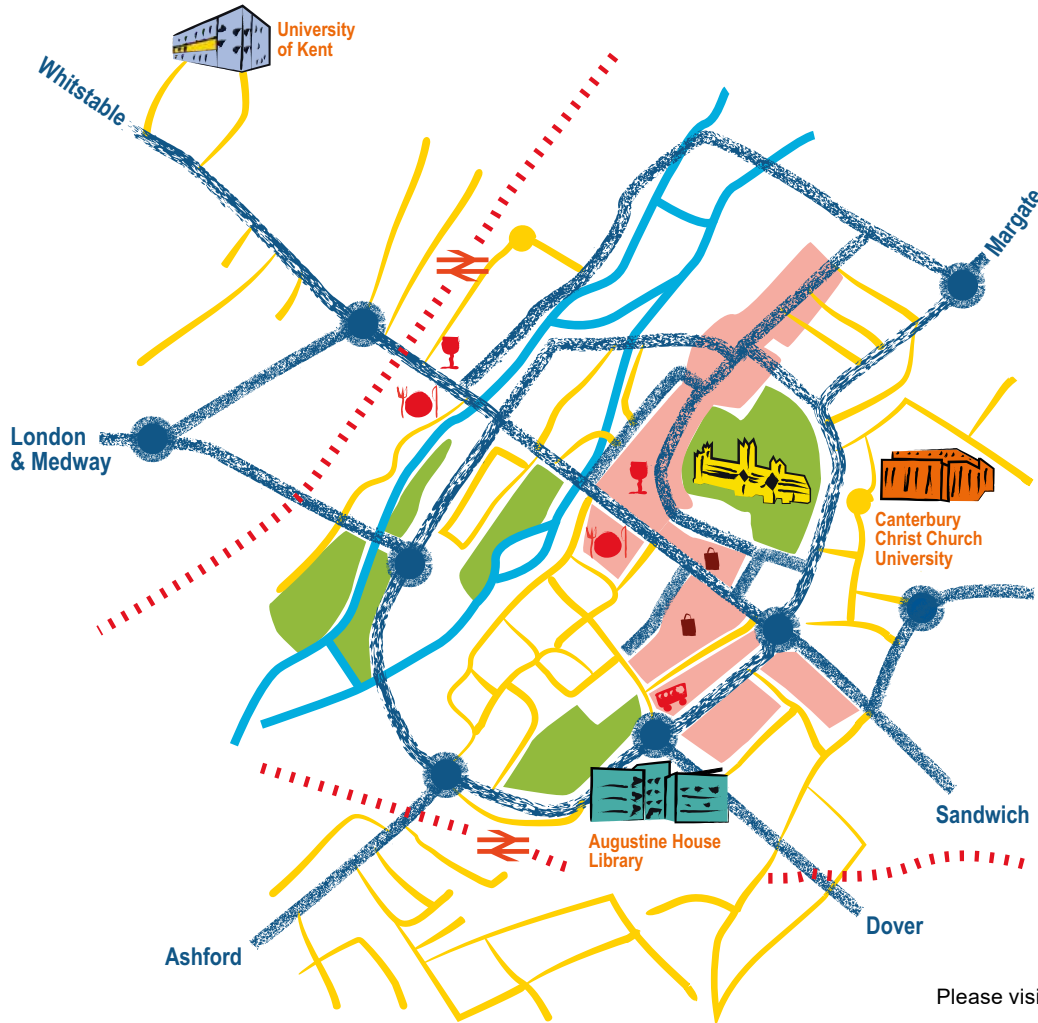
You will be assessed throughout the course. We will use a combination of written and practical assessment methods to test your knowledge, communication and clinical skills.

Your professional development will be captured with the ePortfolio. Regular meetings with your Personal and Clinical Academic Tutors and supervisors will ensure you are given the right support to keep you on track with the course.

Course structure

Year 1	Community and Primary Care in Practice 1			
	Professional Development and Person-Centred Practice 1			
	Skills for Clinical Practice 1			
	Foundations of Health and Disease	Heart, Lungs and Blood	Nutrition, Metabolism and Excretion	
Year 2	Community and Primary Care in Practice 2			
	Professional Development and Person-Centred Practice 2			
	Skills for Clinical Practice 2			
	Neuroscience and Behaviour	Reproduction and Endocrinology	Musculoskeletal and Immune Systems	
Year 3	 Medicine	Psychiatry	Surgery and Perioperative Care	Integrated Practice 1
	Clinical Foundations course			
	Clinical Pharmacology and Therapeutics			
	Scientific Basis of Medicine			
	 Elderly Medicine			
Year 4	Specialist Rotations			Integrated Practice 2
	General Practice and Public Health			
	Individual Research Project			
Year 5	Senior Rotations (Emergency Medicine; General Practice; Psychiatry; Medicine; Surgery; Elderly Medicine)		Finals (Assessments; Transition to Practice; Elective)	

Living and studying in Kent

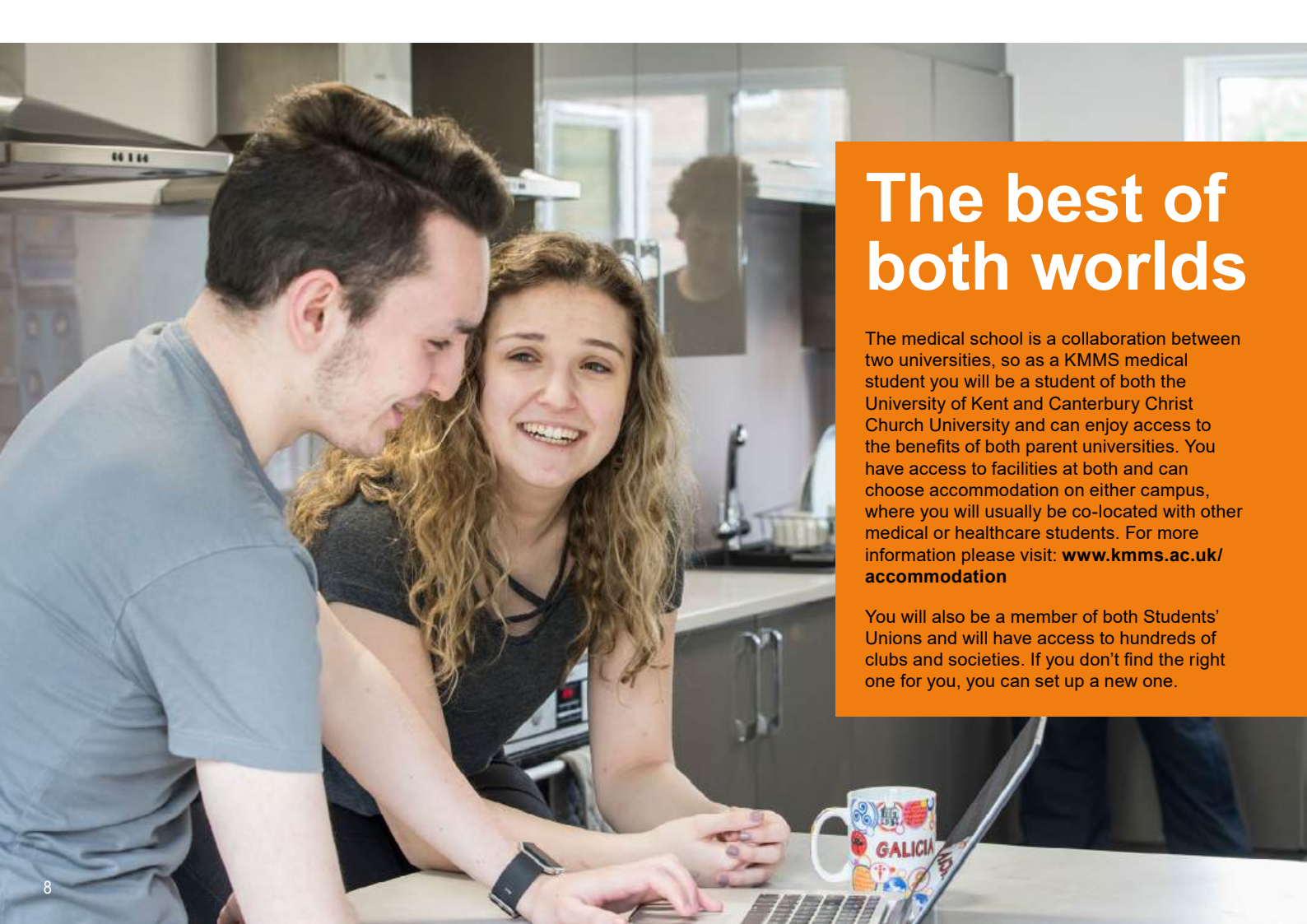


Both campuses are close to the city centre, making it an ideal place to study and live. Just a short distance from the sea and only an hour's train journey from London, there's plenty to explore and enjoy in Kent and Medway and beyond. Mainland Europe is also within easy reach by ferry or train.

In the first two years you will study primarily at both Canterbury campuses (about 15 minutes apart by bus and 45 minutes on foot), sharing facilities with students in other healthcare professions and from a wide range of academic disciplines. You will also have primary care placements in other locations within Kent and Medway.

Years 3-5 will provide the opportunity to experience living and studying for the majority of the year in a part of the region associated with the NHS Trust of your placement. Here your confidence, clinical and communication skills will be further developed as you rotate through a programme of medical, surgical and other specialities to complete the GMC requirements for medical student training.

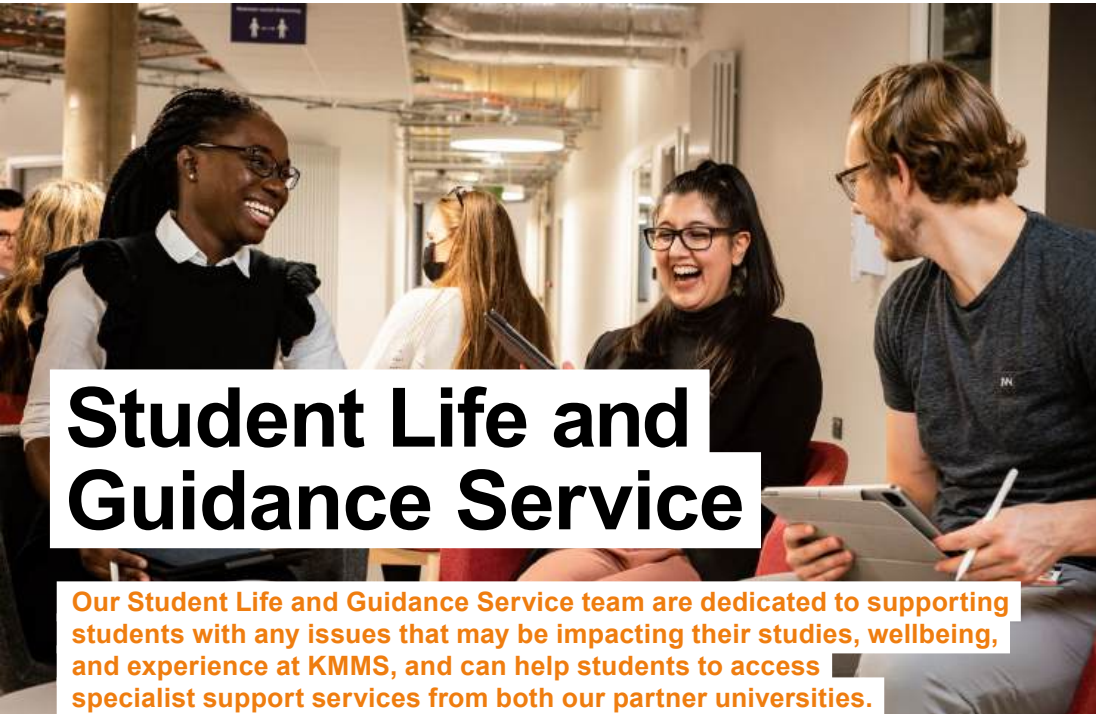
Please visit our website for more details: www.kmms.ac.uk



The best of both worlds

The medical school is a collaboration between two universities, so as a KMMS medical student you will be a student of both the University of Kent and Canterbury Christ Church University and can enjoy access to the benefits of both parent universities. You have access to facilities at both and can choose accommodation on either campus, where you will usually be co-located with other medical or healthcare students. For more information please visit: www.kmms.ac.uk/accommodation

You will also be a member of both Students' Unions and will have access to hundreds of clubs and societies. If you don't find the right one for you, you can set up a new one.



Student Life and Guidance Service

Our Student Life and Guidance Service team are dedicated to supporting students with any issues that may be impacting their studies, wellbeing, and experience at KMMS, and can help students to access specialist support services from both our partner universities.

To ensure that your life as a medical student begins as smoothly as possible and that you can navigate through the course effectively, a range of support will be available including:

- An extensive welcome and induction programme
- Advice on managing your finances
- Thorough preparation for placements
- Counselling, mental health and emotional wellbeing services
- Support with disabilities, specific learning differences and long-term health issues
- Personal and Clinical Academic Tutors, academic advice, and resources
- IT and library services

Funding your degree

At KMMS, we can signpost you to help and advice around how to pay your fees and access financial support.

To help future KMMS students, we are actively seeking donors to fund bursaries and scholarships. We already have a range of financial support packages available.

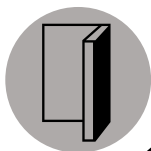
Please visit our website for more details: www.kmms.ac.uk/study/funding-your-degree

Please visit our website for more details: www.kmms.ac.uk

Support throughout your student journey

KMMS facilitates access to a range of services and support provided by both universities.

01



02

KMMS provides a dedicated Student Life and Guidance team who works with students as required to identify the best support from both universities.

KMMS recognises that transitions may be challenging so has developed specialist packages of support and timetabled space for reflection and development.

03



04

KMMS adopts an anticipatory approach to support, providing 1:1 check-ins throughout the programme.

The KMMS Student Life and Guidance team will work with you on your journey to becoming a medical professional, providing additional support as needed. KMMS students will continue to receive high-quality support during placements, via the universities' own student support services or by signposting to specialist services.

05



06

Please visit our website for more details:
www.kmms.ac.uk

What we look for in a KMMS student

Verena Holmes Building,
Canterbury Christ Church University campus



To study at KMMS, you must possess the abilities, commitment and personal qualities that are necessary to deliver the core NHS values and become an excellent doctor.

At KMMS we want to encourage doctors from all backgrounds in Kent, Medway and beyond. We aim to widen access to medical degrees and to have a student body that reflects the diverse community we serve.

When selecting our students, we look for:

- Resilient all-rounders who can demonstrate a range of skills and attributes
- Strong academic achievement, particularly relative to their school background
- Commitment to quality of care and improvement
- An understanding of the NHS core values and the ability to put those values in action
- Compassion, and the ability to treat all people with respect and dignity
- Excellent communication skills and effective team working
- Appreciation of other people's views and willingness to accept responsibility
- A realistic and committed understanding of medical training and clinical practice



Preparing you to become a doctor

In addition to the academic side of the course, KMMS will prepare our students for life as a doctor in the NHS.

We focus on developing the communication and personal skills essential for a person-centred approach to medicine and expect our students to adopt a professional approach to their studies and life as a medical student from the outset.

When planning for your life as a medical student you will need to consider things like professional dress and will be expected to follow our [dress code](#) in different settings throughout the course. We encourage students to factor this into their financial planning too.

In addition, the intensity of the course can make juggling studies with paid employment, family life and extracurricular activities a challenge (although many of our students successfully do so).

We monitor the attendance of our students, and this is an important measure of your professional behaviours, personal organisation and personal responsibility. We really encourage you to consider how you will manage your time effectively whilst studying with us before you apply to the course.

Please view our [Attendance and Engagement Policy](#) for details and expectations from KMMS.



Equity, Diversity and Inclusion at KMMS

We take our values (please see page 2) and Equity, Diversity and Inclusion (EDI) very seriously at KMMS and aim to create a community where everyone feels welcome.

We have a staff and student EDI committee that meets termly to discuss issues related to inclusion and to challenge exclusion. This is led by our dedicated EDI lead, Dr Helen Bintley, who works continually to develop EDI strategies and culture.

Our students are encouraged to join the group and be actively involved in helping us to be as inclusive as we can be whilst supporting you to become a doctor.

In Year 2 of the course, KMMS students are invited to co-create the KMMS Inclusion Conference, an annual learning event for KMMS staff and students. The conference theme in 2025 was 'Caring with Compassion in an Increasingly Polarised World', and invited participants to consider their responses to a range of contemporary social forces that may challenge the delivery of empathic healthcare.



MedSoc

Hey! We're the KMMS Medical Society. As medicine is a demanding course, we want to ensure our peers have a chance to participate in a range of activities. This year we have run sports events, pub quizzes, movie nights, charity events and the annual Winter and Halfway Balls.

It's not all socials, socials, socials! We also have an active role in supporting students to voice their opinions and feedback to the medical school,

through student representation at the Student Staff Liaison Committee and within the KMMS governance structure, forming part of an ongoing dialogue between students and faculty to provide the best opportunity to succeed and improve our student experience.

Interests in specialties are nurtured by the increasing number of sub-societies that host numerous events including guest speakers from a variety of medical and non-medical backgrounds.

Our commitment to being an inclusive and self-aware organisation means that we are constantly evolving alongside the medical school. If you think that we're missing something or that we can do something better, we encourage you to reach out to the committee or run in our annual elections to hold a post.



Early Clinical Placements

Early clinical placements are a key feature of the KMMS programme. For the first two years placements are primarily in primary care networks (PCNs) across Kent and Medway.

Placement learning activities offer an insight into the needs of patients in a wide range of settings and allow KMMS students to learn

about the variety of roles in healthcare and how these practitioners come together to create effective multi-disciplinary teams.

Working with experienced educators, there will be opportunities to develop the clinical skills taught on campus.

From Year 3 onwards, KMMS students will begin placements in the Acute Care and Social Care Trusts in Kent and Medway.

Research



Research is a core activity at KMMS. Our researchers are leading studies in a wide range of fields, including around dementia, cognition, sleep, health inequalities, ethnic minorities, coastal and rural communities, global health challenges, artificial intelligence and virtual reality. A diverse and innovative environment for research has been developed, with considerable funding received from a range of funders including the Engineering and Physical Research Centre, the Social Policy Research Centre, Wellcome, the National Institute for

Health Research, the Medical Research Council, and the Clinical Research Network.

KMMS offers medical students opportunities to engage with research and to work closely with leading experts in several medical and health specialties. These include student selected projects, intercalated master's programmes, summer internships and electives, as well as affiliated PhDs, and several academic clinical fellow places across various medical specialisms.

Working closely with experts will enhance students' understanding of innovations in medicine and of healthcare delivery in diverse communities locally and globally. We are proud that some of our students are already presenting their research at international conferences.

Please visit our Research webpages for more information: www.kmms.ac.uk/research

Entry requirements

Qualification	Required	Required subjects
GCSE or equivalent	A* to B or 9 to 6	5 subjects minimum which must include English Language and Mathematics. We also require Biology, Chemistry and Physics. Double Science will be accepted as an alternative to the three separate sciences
A level or equivalent	AAB	1st A level group*: Chemistry, Biology 2nd A level group: Chemistry, Biology, Mathematics, Psychology, Physics, Computing/Computer Science 3rd A level group: Any other A level except General Studies, Critical Thinking
International Baccalaureate	34 points	Must include Biology or Chemistry at Higher Level 6 and one further Higher Level subject in Biology, Chemistry, Maths, Physics or Psychology at grade 6
Bachelors degree	2:1 Honours or equivalent	Acceptable degree subjects are listed on our website

KMMS does not use predicted grades at all. Therefore you will be considered on your most advanced achieved qualifications: GCSE if you are pre-A level, A levels if you are post-A level but have not yet graduated from a Bachelor's degree course.

*Including the practical endorsement in Science A Levels where appropriate.

Additional information

- BTEC/IBCP/T levels not accepted
- Applicants who have studied an Access to HE (Medicine) programme will be considered for entry unless they are within three years of sitting A Levels
- KMMS does not accept deferred entry applicants or transfers from other medical schools
- All applicants must be 18 years old or above when they undertake their first clinical placement in the first term of Year 1, usually early November
- All successful applicants will need to pass an enhanced Disclosure and Barring Service and Occupational Health Check, which will be arranged and paid for by KMMS

For further details, please visit: www.kmms.ac.uk/study/applying

How to apply

To apply to KMMS for 2026 entry you will need to submit your application to UCAS by the deadline of **15 October 2025**.

UCAS institution Code: **K31**

Course Code: **A100**

You will also need to have taken your UCAT (University Clinical Aptitude Test) within the year of your application.



What could life after graduating from KMMS hold for you?

KMMS will provide support and advice for students as they near the end of their undergraduate education and look ahead to the next steps in their career. As a newly qualified doctor, you will be equipped with the curiosity, academic, professional and clinical skills to influence and improve future healthcare in Kent and Medway, and beyond.

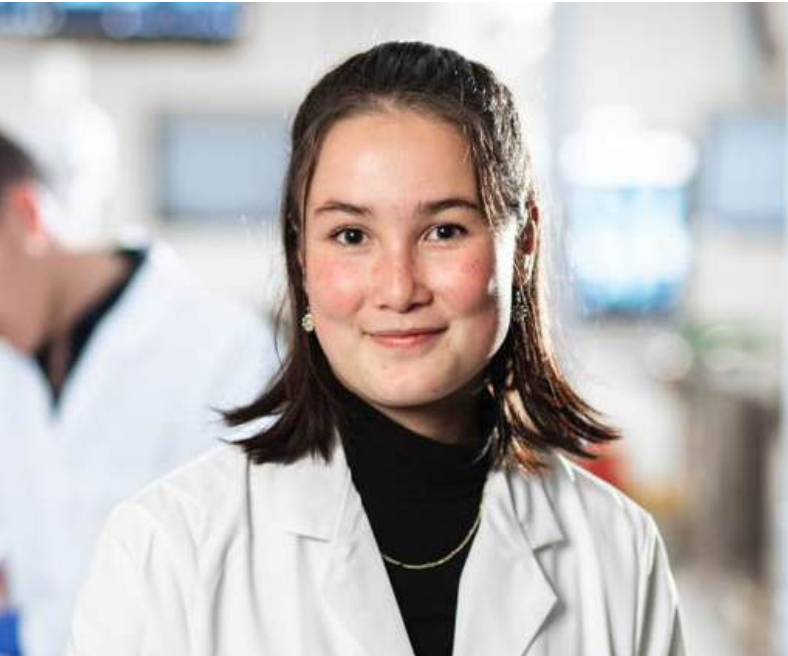
We very much hope you will choose to work in Kent and Medway or the south-east of England. However, your medical degree will allow our Home Students to apply for a

Foundation Programme job anywhere in the UK. This postgraduate training programme will provide you with the required experience to gain full registration with the General Medical Council. Please note that admission to the Foundation Programme by overseas students is dependent on government policy at the time students graduate.

Once fully registered, you will have the education and experience to apply for any one of over 100 possible medical specialties.

Qualified doctors also work in the arts and media, business, the voluntary sector, government, research and technology. There are national programmes available for medical graduates to obtain specialist postgraduate training and experience in leadership, management, entrepreneurialism and research.

For information about the application process, interviews and other details, please visit: www.kmms.ac.uk



“I love the sense of community at KMMS. Knowing everyone and having a good relationship with students and staff creates such a supportive environment.”

Daisy
KMMS student



“When I joined KMMS I realised how fortunate I was to be at a medical school which embraces the diversity of its students.”

Stephen
KMMS student

Follow us



@KMMSmedschool

To find out more details and to contact us please visit: www.kmms.ac.uk

Please note the Admissions team is live on Instagram from 2-4 pm every Wednesday to answer your questions.

Canterbury Christ Church University
and University of Kent in collaboration.



Canterbury
Christ Church
University

University of
Kent