

A young man with short dark hair, smiling broadly, stands in a hospital ward. He is wearing a light blue short-sleeved button-down shirt and dark trousers with a black belt. A stethoscope is draped around his neck. The background is a blurred hospital room with other people and medical equipment.

**KENT AND  
MEDWAY  
MEDICAL  
SCHOOL**

**Become  
the doctor  
you want  
to be**



Canterbury  
Christ Church  
University

University of  
**Kent**

**2026 entry**



**“At Kent and Medway Medical School, accredited by the General Medical Council (GMC), we expect academic ability, but equally we are looking for the right personal qualities that people require in a good doctor.”**

Professor Chris Holland  
Founding Dean of Kent and Medway Medical School



# Welcome

I am tremendously excited to welcome you to the Kent and Medway Medical School (KMMS). If you dream of making a real difference in people's lives through medicine, we want to hear from you.

Our vision is simple: we are building a medical school where future doctors learn to put patients first, embrace new ideas, and work together to solve healthcare challenges. Whether your passion lies in developing new treatments, working directly with patients, or advocating for improved healthcare access, KMMS offers you a path to achieve your goals.

Located in Canterbury, we combine the best of both worlds, Canterbury Christ Church University and the University of Kent, to create something special. Our programme combines hands-on clinical experience with cutting-edge research opportunities. We're particularly proud that our students come from all walks of life, bringing diverse perspectives that make our medical community stronger.

Imagine the incredible possibilities ahead: together, we will work toward breakthrough treatments for diseases that currently seem unstoppable. We will help people live longer, healthier lives, even when confronting complex health challenges. By choosing KMMS, you are not only embarking on a medical career but also joining a community dedicated to shaping the future of healthcare.

Your background, experiences, and unique perspective matter to us. If you share our commitment to compassionate and innovative healthcare, we encourage you to apply. We are here to support you every step of the way.

As a medical school accredited by the General Medical Council (GMC), we're excited to learn more about you and your aspirations in medicine.

We wish you every success in your application.

**Professor Chris Holland** | Founding Dean

# Our vision

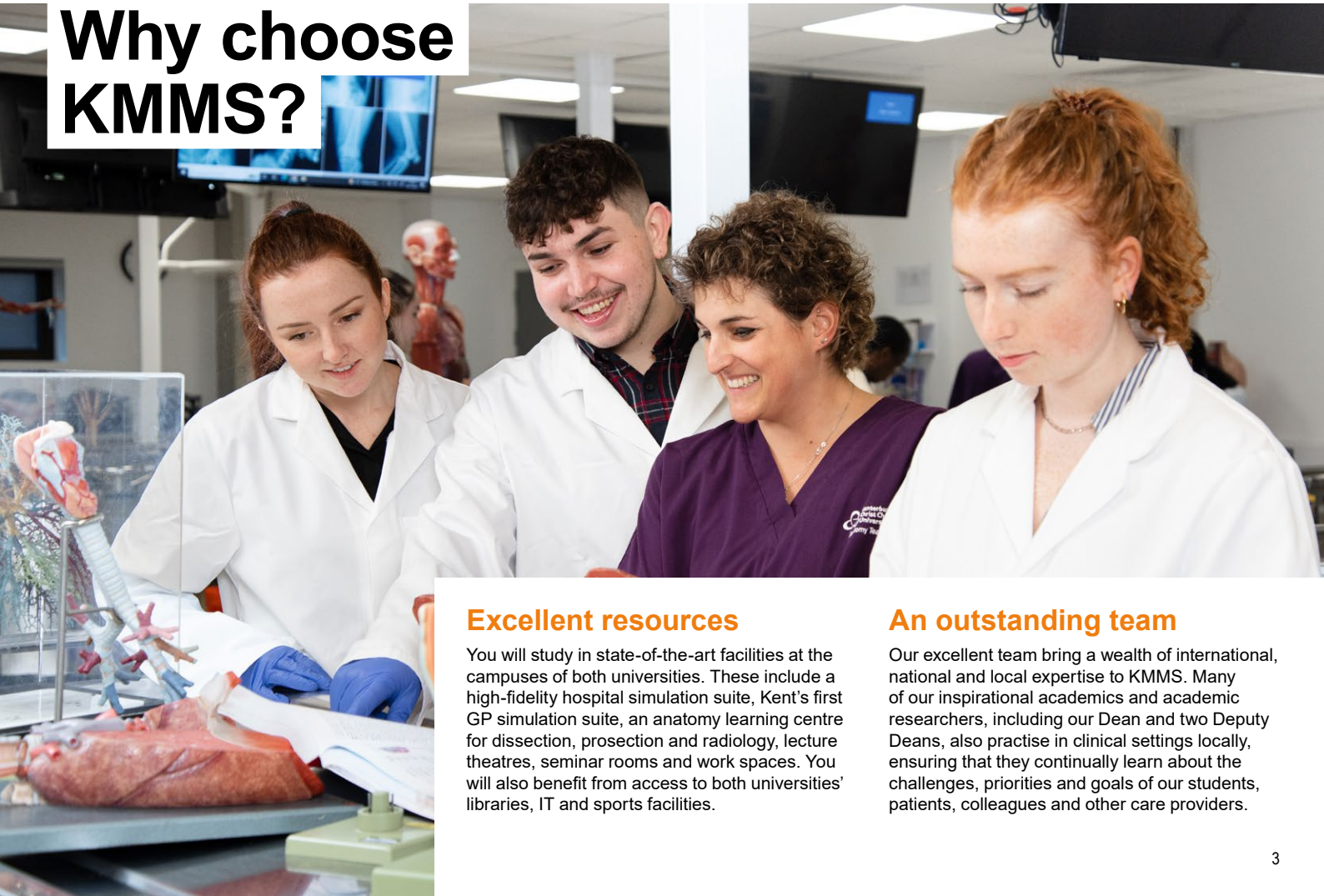
**Kent and Medway Medical School will be a beacon for first-class medical education and research, and the first choice for all those aspiring to achieve excellence in person-centred medical care in the UK.**

# Our values

- **Be brave**
- **Be kind**
- **Be respectful**
- **Be passionate**
- **Be collaborative**
- **Be innovative**
- **Be curious**



# Why choose KMMS?



## Excellent resources

You will study in state-of-the-art facilities at the campuses of both universities. These include a high-fidelity hospital simulation suite, Kent's first GP simulation suite, an anatomy learning centre for dissection, prosection and radiology, lecture theatres, seminar rooms and work spaces. You will also benefit from access to both universities' libraries, IT and sports facilities.

## An outstanding team

Our excellent team bring a wealth of international, national and local expertise to KMMS. Many of our inspirational academics and academic researchers, including our Dean and two Deputy Deans, also practise in clinical settings locally, ensuring that they continually learn about the challenges, priorities and goals of our students, patients, colleagues and other care providers.



## Fully Accredited April 2025

Kent and Medway Medical School (KMMS), a collaboration between Canterbury Christ Church University and the University of Kent, is proud to announce it has received full accreditation from the General Medical Council (GMC).

## A welcoming NHS community across Kent and Medway

We have built exciting new relationships with partners across the NHS in Kent and Medway from community, primary, secondary, acute and mental health care settings. We are partnered with 90 GP practices, community and mental healthcare providers and 4 acute care hospital trusts. You will experience a diverse range of healthcare priorities and solutions. These connections have allowed us to build a programme of high-quality placements across our region from your first term until you graduate at Canterbury Cathedral.

# Our degree programme

**Our Bachelor of Medicine, Bachelor of Surgery (BM BS)\* is jointly awarded by Canterbury Christ Church University and the University of Kent.**



\*In common with all new UK medical schools, Kent and Medway Medical School is subject to successful progress through the GMC's rigorous quality assurance processes. We have successfully completed several stages of this process and will be subject to ongoing review. The final-stage assessment and approval for the award of a UK medical degree is at the end of the first complete delivery of the course.

## What our course offers you

- **A systems-based curriculum**
- **An innovative and integrated programme**
- **Early patient contact** – you will begin clinical placements within the first term of the first year of your course



Learning will be delivered through lectures, small group learning, dissection and prosection, tutorials, simulation, e-modules, placements and through self-directed learning.

## Assessment

You will be assessed throughout the course. We will use a combination of written and practical assessment methods to test your knowledge, communication and clinical skills.

Your professional development will be captured with the ePortfolio. Regular meetings with your Personal and Clinical Academic Tutors and supervisors will ensure you are given the right support to keep you on track with the course.

# Course structure

Year 1	Community and Primary Care in Practice 1								
	Professional Development and Person-Centred Practice 1								
	Skills for Clinical Practice 1								
	Foundations of Health and Disease		Heart, Lungs and Blood		Nutrition, Metabolism and Excretion				
Year 2	Community and Primary Care in Practice 2								
	Professional Development and Person-Centred Practice 2								
	Skills for Clinical Practice 2								
	Neuroscience and Behaviour		Reproduction and Endocrinology		Musculoskeletal and Immune Systems				
Year 3			Medicine		Psychiatry		Surgery and Perioperative Care		Integrated Practice 1
	Clinical Foundations course								
	Clinical Pharmacology and Therapeutics								
	Scientific Basis of Medicine								
			Elderly Medicine						
Year 4	Specialist Rotations								Integrated Practice 2
	General Practice and Public Health								
	Individual Research Project								
Year 5	Senior Rotations (Emergency Medicine; General Practice; Psychiatry; Medicine; Surgery; Elderly Medicine)						Finals (Assessments; Transition to Practice; Elective)		

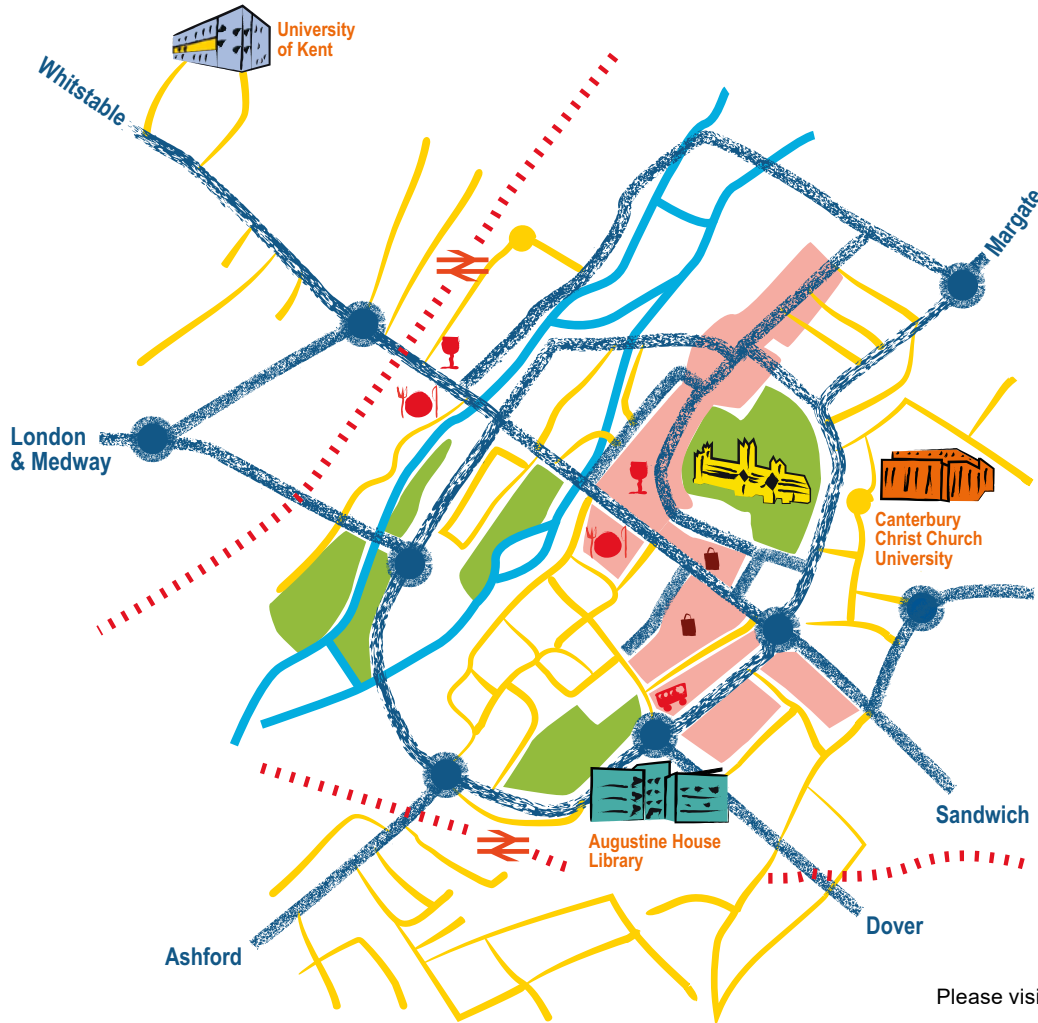


# Living and studying in Kent

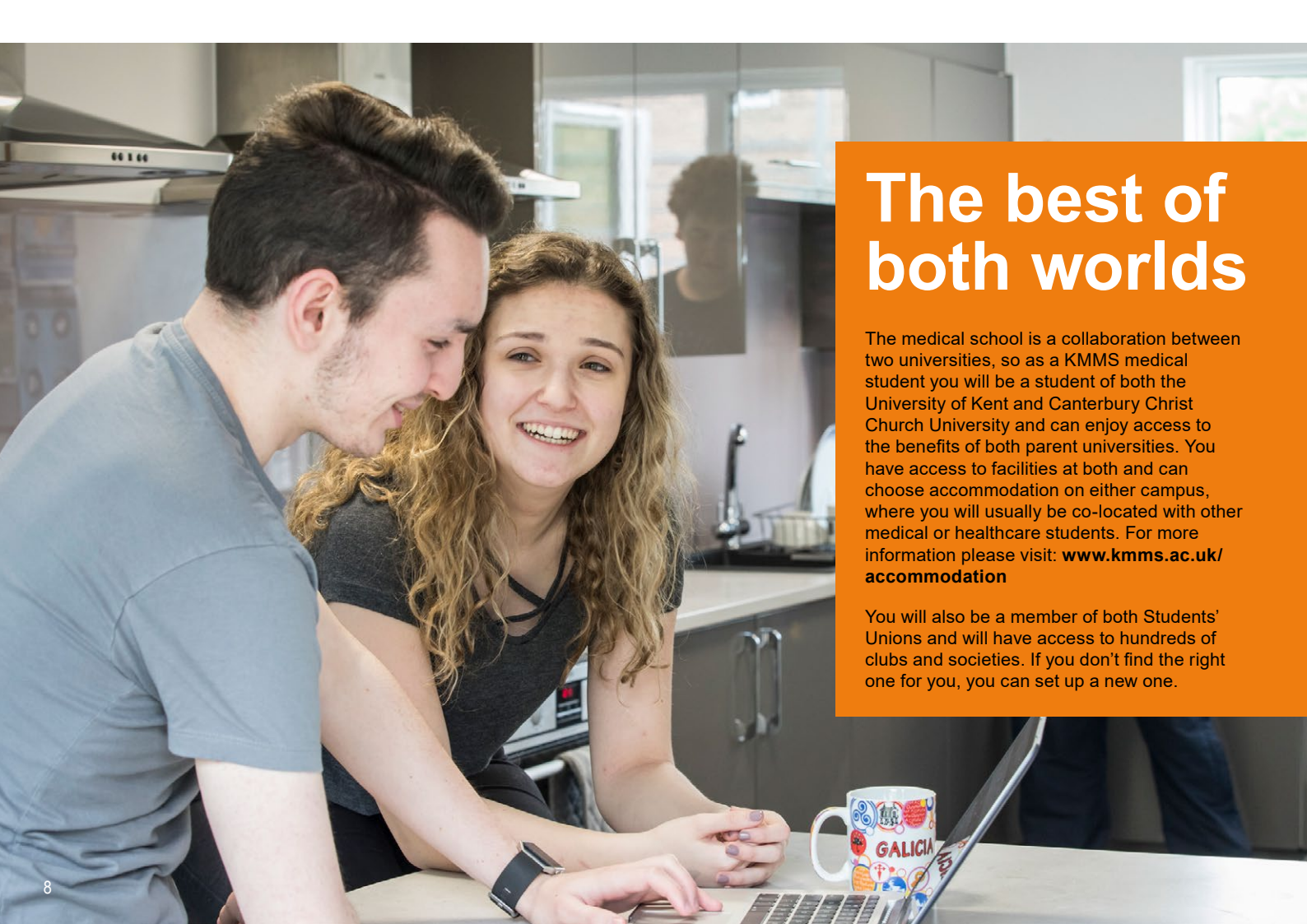
Both campuses are close to the city centre, making it an ideal place to study and live. Just a short distance from the sea and only an hour's train journey from London, there's plenty to explore and enjoy in Kent and Medway and beyond. Mainland Europe is also within easy reach by ferry or train.

In the first two years you will study primarily at both Canterbury campuses (about 15 minutes apart by bus and 45 minutes on foot), sharing facilities with students in other healthcare professions and from a wide range of academic disciplines. You will also have primary care placements in other locations within Kent and Medway.

Years 3-5 will provide the opportunity to experience living and studying for the majority of the year in a part of the region associated with the NHS Trust of your placement. Here your confidence, clinical and communication skills will be further developed as you rotate through a programme of medical, surgical and other specialties to complete the GMC requirements for medical student training.



Please visit our website for more details: [www.kmms.ac.uk](http://www.kmms.ac.uk)



# The best of both worlds

The medical school is a collaboration between two universities, so as a KMMS medical student you will be a student of both the University of Kent and Canterbury Christ Church University and can enjoy access to the benefits of both parent universities. You have access to facilities at both and can choose accommodation on either campus, where you will usually be co-located with other medical or healthcare students. For more information please visit: [www.kmms.ac.uk/accommodation](http://www.kmms.ac.uk/accommodation)

You will also be a member of both Students' Unions and will have access to hundreds of clubs and societies. If you don't find the right one for you, you can set up a new one.



# Student Life and Guidance Service

**Our Student Life and Guidance team is here to support you throughout your time at KMMS. Whether you're facing challenges that may affect your studies or simply need someone to talk to, they're available to help. They can also connect you to a wide range of specialist support services at our partner universities.**

To help you settle into life as a medical student, and navigate your way through your course effectively, a range of support is available including:

- An extensive welcome and induction programme.
- Thorough preparation for placements.
- A Personal Academic Tutor for the first two years and a Clinical Academic Tutor for the final three years, providing academic guidance and signposting to additional assistance.
- Counselling, Mental Health Advisers, and a schedule of activities to support your wellbeing.
- Support with disabilities, long term health conditions, autism, and Specific Learning Differences.
- IT and library services.
- Careers and employability guidance and support.

## Funding your degree

At KMMS, we can signpost you to help and advice around how to pay your fees and access financial support.

To help future KMMS students, we are actively seeking donors to fund bursaries and scholarships. We already have a range of financial support packages available.

Please visit our website for more details: [www.kmms.ac.uk/study/funding-your-degree](http://www.kmms.ac.uk/study/funding-your-degree)

Please visit our website for more details:  
[www.kmms.ac.uk](http://www.kmms.ac.uk)

# Support throughout your student journey

As a KMMS student, you'll benefit from a wide variety of student support services available through our partner universities.

01



02

Our Student Life and Guidance team provides in-house support to students and identifies additional specialist support available when needed.

KMMS recognises that transitions may be challenging. That's why we've developed specialist packages of support and timetabled space for reflection and development.

03



04

KMMS adopts an anticipatory approach to support, providing 1:1 check-ins throughout the programme.

The KMMS Student Life and Guidance team, along with specialist support services, provide support throughout the course as needed, both on the university campus and during placements.

05



06

KMMS provides a programme of support and guidance to assist students with their preparation into practice post-graduation from the course.

Please visit our website for more details:  
**[www.kmms.ac.uk](http://www.kmms.ac.uk)**

Please visit our website for more details: **[www.kmms.ac.uk](http://www.kmms.ac.uk)**



# What we look for in a KMMS student

Verena Holmes Building,  
Canterbury Christ Church University campus



**To study at KMMS, you must possess the abilities, commitment and personal qualities that are necessary to deliver the core NHS values and become an excellent doctor.**

At KMMS we want to encourage doctors from all backgrounds in Kent, Medway and beyond. We aim to widen access to medical degrees and to have a student body that reflects the diverse community we serve.

When selecting our students, we look for:

- Resilient all-rounders who can demonstrate a range of skills and attributes
- Strong academic achievement, particularly relative to their school background
- Commitment to quality of care and improvement
- An understanding of the NHS core values and the ability to put those values in action
- Compassion, and the ability to treat all people with respect and dignity
- Excellent communication skills and effective team working
- Appreciation of other people's views and willingness to accept responsibility
- A realistic and committed understanding of medical training and clinical practice



# Preparing you to become a doctor

**In addition to the academic side of the course, KMMS will prepare our students for life as a doctor in the NHS.**

We focus on developing the communication and personal skills essential for a person-centred approach to medicine and expect our students to adopt a professional approach to their studies and life as a medical student from the outset.

When planning for your life as a medical student you will need to consider things like professional dress and will be expected to follow our [dress code](#) in different settings throughout the course. We encourage students to factor this into their financial planning too.

In addition, the intensity of the course can make juggling studies with paid employment, family life and extracurricular activities a challenge (although many of our students successfully do so).

We monitor the attendance of our students, and this is an important measure of your professional behaviours, personal organisation and personal responsibility. We really encourage you to consider how you will manage your time effectively whilst studying with us before you apply to the course.

Please view our [Attendance and Engagement Policy](#) for details and expectations from KMMS.



# Equity, Diversity and Inclusion at KMMS

**We take our values (please see page 2) and Equity, Diversity and Inclusion (EDI) very seriously at KMMS and aim to create a community where everyone feels welcome.**

We have a staff and student EDI committee that meets termly to discuss issues related to inclusion and to challenge exclusion. This is led by our dedicated EDI lead, Dr Helen Bintley, who works continually to develop EDI strategies and culture.

Our students are encouraged to join the group and be actively involved in helping us to be as inclusive as we can be whilst supporting you to become a doctor.

In Year 2 of the course, KMMS students are invited to co-create the KMMS Inclusion Conference, an annual learning event for KMMS staff and students. The conference theme in 2025 was 'Caring with Compassion in an Increasingly Polarised World', and invited participants to consider their responses to a range of contemporary social forces that may challenge the delivery of empathic healthcare.





## MedSoc

Hey! We're the KMMS Medical Society. As medicine is a demanding course, we want to ensure our peers have a chance to participate in a range of activities. This year we have run sports events, pub quizzes, movie nights, charity events and the annual Winter and Halfway Balls.

It's not all socials, socials, socials! We also have an active role in supporting students to voice their opinions and feedback to the medical school,

through student representation at the Student Staff Liaison Committee and within the KMMS governance structure, forming part of an ongoing dialogue between students and faculty to provide the best opportunity to succeed and improve our student experience.

Interests in specialties are nurtured by the increasing number of sub-societies that host numerous events including guest speakers from a variety of medical and non-medical backgrounds.

Our commitment to being an inclusive and self-aware organisation means that we are constantly evolving alongside the medical school. If you think that we're missing something or that we can do something better, we encourage you to reach out to the committee or run in our annual elections to hold a post.





# Early Clinical Placements

**Early clinical placements are a key feature of the KMMS programme. For the first two years placements are primarily in primary care networks (PCNs) across Kent and Medway.**

Placement learning activities offer an insight into the needs of patients in a wide range of settings and allow KMMS students to learn

about the variety of roles in healthcare and how these practitioners come together to create effective multi-disciplinary teams.

Working with experienced educators, there will be opportunities to develop the clinical skills taught on campus.

From Year 3 onwards, KMMS students will begin placements in the Acute Care and Social Care Trusts in Kent and Medway.

# Research



Research is a core activity at KMMS, supported by the ongoing growth of our research office and continued expansion and diversification of our research portfolio. We are strengthening our focus across key areas of focus, including mental health, global health, and cognitive neuroscience. During the initial setup phase, KMMS-led and supported research has secured over £8 million in grant funding from major funders such as NIHR, Medical Research Council, Clinical Research Network, Wellcome, and Engineering and Physical Sciences Research Council.

Our researchers are leading and collaborating on exciting large-scale and interdisciplinary studies across a wide range of fields, including dementia,

cognition, sleep, and health inequalities, encompassing ethnic minorities, coastal and rural communities, and expanding our research reach into innovation and technology through artificial intelligence and virtual reality studies.

KMMS offer medical students valuable opportunities to engage in research through our expanding network of academic and clinical partners. Students can undertake independent projects, intercalated master's programmes, electives, and National Institute for Health and Care Research (NIHR) funded summer internships, exploring topics from vascular surgery to artificial intelligence. These experiences enrich the student journey and

allow a deeper understanding of medicine, healthcare delivery, and innovation in diverse communities, both locally and globally. Many students have already presented their research at international conferences.

Our competitive academic clinical fellow programme, developed in collaboration with local NHS Trusts, supports research across specialisms including renal medicine, intensive care, and psychiatry.

Please visit our Research webpages for more information: [www.kmms.ac.uk/research](http://www.kmms.ac.uk/research)

# Entry requirements

Qualification	Required	Required subjects
GCSE or equivalent	A* to B or 9 to 6	5 subjects minimum which must include English Language and Mathematics. We also require Biology, Chemistry and Physics. Double Science will be accepted as an alternative to the three separate sciences
A level or equivalent	AAB/AAA <sup>1</sup>	1st A level group <sup>2</sup> : Chemistry, Biology 2nd A level group: Chemistry, Biology, Mathematics, Psychology, Physics, Computing/Computer Science 3rd A level group: Any other A level except General Studies, Critical Thinking
International Baccalaureate	36/34 <sup>1</sup> points	Must include Biology or Chemistry at Higher Level 6 and one further Higher Level subject in Biology, Chemistry, Maths, Physics or Psychology at grade 6
Bachelors degree	2:1 Honours or equivalent	Acceptable degree subjects are listed on our website

**KMMS does not use predicted grades at all. Therefore, for selection for interview, you will be you will be considered on your most advanced achieved qualifications: GCSE if you are pre-A level, A levels if you are post-A level but have not yet graduated from a Bachelor's degree course. Offers for A-level and IB students will be contextualised to your school performance.**

## Additional information

- BTEC/IBCP/T levels not accepted
- Applicants who have studied an Access to HE (Medicine) programme will be considered for entry unless they are within three years of sitting A Levels

- KMMS does not accept deferred entry applicants or transfers from other medical schools
- All applicants must be 18 years old or above when they undertake their first clinical placement in the first term of Year 1, usually early November

- All successful applicants will need to pass an enhanced Disclosure and Barring Service and Occupational Health Check, which will be arranged and paid for by KMMS

<sup>1</sup> For further details, please visit:  
[www.kmms.ac.uk/study/applying](http://www.kmms.ac.uk/study/applying)

<sup>2</sup> Including the practical endorsement in Science A Levels where appropriate.



# How to apply

To apply to KMMS for 2026 entry you will need to submit your application to UCAS by the deadline of **15 October 2025**.

UCAS institution Code: **K31**

Course Code: **A100**

You will also need to have taken your UCAT (University Clinical Aptitude Test) within the year of your application.



## What could life after graduating from KMMS hold for you?

KMMS will provide support and advice for students as they near the end of their undergraduate education and look ahead to the next steps in their career. As a newly qualified doctor, you will be equipped with the curiosity, academic, professional and clinical skills to influence and improve future healthcare in Kent and Medway, and beyond.

We very much hope you will choose to work in Kent and Medway or the south-east of England. However, your medical degree will allow our Home Students to apply for a

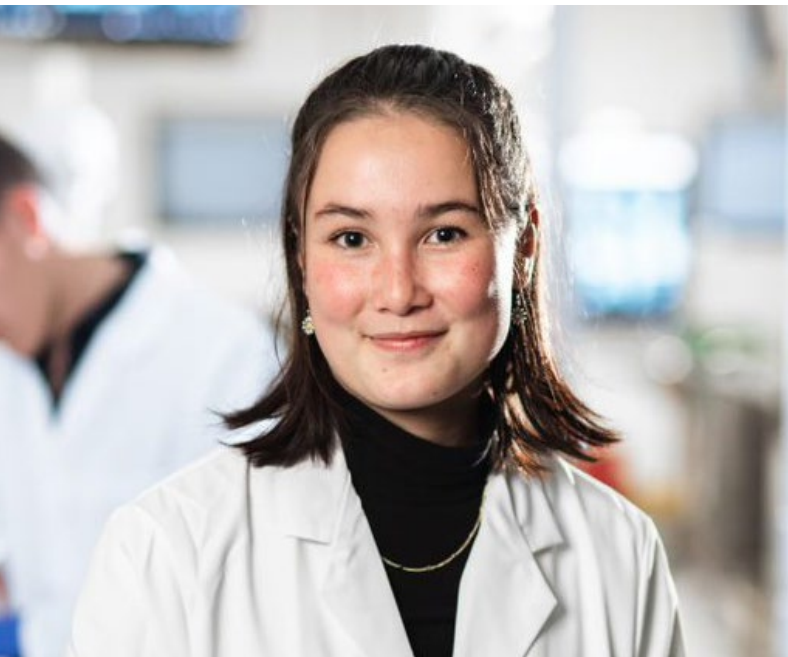
Foundation Programme job anywhere in the UK. This postgraduate training programme will provide you with the required experience to gain full registration with the General Medical Council. Please note that admission to the Foundation Programme by overseas students is dependent on government policy at the time students graduate.

Once fully registered, you will have the education and experience to apply for any one of over 100 possible medical specialties.

Qualified doctors also work in the arts and media, business, the voluntary sector, government, research and technology. There are national programmes available for medical graduates to obtain specialist postgraduate training and experience in leadership, management, entrepreneurialism and research.

**For information about the application process, interviews and other details, please visit: [www.kmms.ac.uk](http://www.kmms.ac.uk)**





**“I love the sense of community at KMMS. Knowing everyone and having a good relationship with students and staff creates such a supportive environment.”**

Daisy  
KMMS student



**“When I joined KMMS I realised how fortunate I was to be at a medical school which embraces the diversity of its students.”**

Stephen  
KMMS student

## Follow us



@KMMSmedschool

To find out more details and to contact us  
please visit: **[www.kmms.ac.uk](http://www.kmms.ac.uk)**

Please note the Admissions team is  
live on Instagram from 2-4 pm every  
Wednesday to answer your questions.

Canterbury Christ Church University  
and University of Kent in collaboration.



Canterbury  
Christ Church  
University

University of  
**Kent**